



# KLE ACADEMY OF HIGHER EDUCATION AND RESEARCH (Deemed-to-be-University)-Belagavi, Karnataka



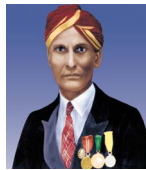
Nurturing talent.  
Sharing value with the world.

Accredited "A" Grade by NAAC Placed in "A" Category by MHRD (Government of India)





## FOUNDERS



Sri. Chachadi  
Veerabhadrapa Gunappa Desai



Sri. Artal Rudragouda



Sri. Vajappa Anigol

## VISIONARIES



Sri. B.S. Hanchinal



Sri. H.F. Kattimani



Sri. B.B. Mamadapur



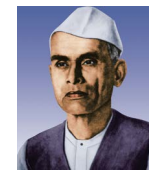
Sri. M.R. Sakhare



Sri. S.S. Basavanal



Sri. P.R. Chikkodi



Sri. V.V. Patil

## A century of sharing knowledge

On the 13th of November, 1916, a pioneering effort was begun, that would change the educational landscape of North Karnataka. This was the day the first institution of the KLE Society was established. From humble beginnings rooted in the sacrifice of its founders, the Society now runs over 270 institutions across Karnataka and overseas ranging from kindergarten to post-doctoral research. The underlying philosophy was to encourage individual learning and transform the mindset of the average citizen. The outcome of which, would transform society and bring about positive change. Currently over 1.35,000 students are pursuing their academic dream in these institutions that impart quality education in areas ranging from Healthcare Delivery, Agriculture, Engineering, IT, Law, Fashion Technology, Hotel Management, Tourism Administration Pharmacy, Homeopathy, Music and Broadcasting through FM Radio, Nursing, B-Schools etc. They are inspired and guided by an accomplished and highly qualified faculty consisting of over 16,000 committed individuals who share a common passion for education.

In 2006, the KLE Society attained the key objective of gaining recognition from the University Grants Commission (UGC) for the KLE Academy of Higher Education and Research (Deemed-to-be-University). The University takes immense pride in its curriculum and endeavours to follow internationally accepted education and healthcare practices. A new era dawns at the KLE Society with the birth of the KLE Technological University (Under Karnataka University Act, 2013)

I am indeed fortunate to be at the helm of the KLE Society and humbly follow in the imposing footsteps of its visionary founders. I have always been inspired by their lofty principles, driven by their integrity and desire to serve society. As the KLE Society navigates successfully beyond a century of excellence, I rededicate myself to its service with renewed enthusiasm and sincerely thank all those who have been part of this glorious journey of over a 100 years and countless dreams.

**Dr. Prabhakar Kore** <sup>MP</sup>  
Chairman-KLE Society  
Chancellor-KAHER

# KLE ACADEMY OF HIGHER EDUCATION AND RESEARCH (Deemed-to-be-University)-Belagavi, Karnataka

Our aim is to create top-notch professionals to serve the Healthcare domain. This is essential in a country like India which needs a myriad of talented and trained individuals with a commitment to serve society.



Medicine / Dentistry / Pharmacy / Nursing / Ayurveda / Physiotherapy  
Homeopathy / Hotel Management / School of Music & FM Radio Station



# KLE Academy of Higher Education and Research, Belagavi



Dr. Vivek Arvind Saoji  
Vice-Chancellor

Dr V A Kothiwale  
Registrar

The KLE Academy of Higher Education and Research (KAHER), Deemed-to-be-University, Belagavi established on 13th April 2006 is one of the premier Health Science Universities in the country, imparting high quality health profession's education at Under-Graduate, Post-Graduate and Post-doctoral levels. Based on the excellent infrastructure, faculty base, research, contemporary teaching & training practices and overall academic environment, the Ministry of Human Resource Development (MHRD), Government of India, on the recommendations of the University Grants Commission (UGC), granted Deemed-to-be-University status to nine colleges of KLE Society (sponsoring society) and thus the KLE Deemed-to-be-University came into existence.

The University has been accredited with 'A' Grade by NAAC (2nd Cycle in 2016) with CGPA of 3.34. It has been consistently ranked high by National Institutional Ranking Framework (NIRF), it is placed in Category 'A' University by MHRD and placed 2nd Rank by Karnataka State Universities Rating Framework (K-SURF), Government of Karnataka under the 'Established University' Category. The University has been ranked 3rd cleanest campus by MHRD. The University has been ranked 66th by QS India Ranking-2020 and also figures in the Times Higher Education World Ranking in 301 to 400 band.

## Infrastructure

The University and its constituent colleges are housed in a 110 acres sprawling, beautiful, clean and green campus. All the buildings are an example of modern architecture, its convention centre with four auditoriums is comparable to best anywhere in

the world. All the class-rooms are provided with modern audio-visual equipments, the libraries are well-equipped and well-stocked. The University has recently established the state-of-art high tech, high fidelity simulation centre. The University also provides excellent facilities for extra-curricular and co-curricular activities in the form of huge amphitheatre, Olympic size swimming pool, modern gymnasium, wood floored badminton courts, sports arena, stadium, tennis courts, etc. The campus is well-maintained with lot of greenery. The University garden is a wonderful relaxing place with water bodies and musical fountain.

There is a 2400 bedded modern tertiary care, broad and super-specialty hospital attached to the University. The hospital offers all the modern, diagnostic and therapeutic facilities. This hospital not only provides excellent clinical services for a population of more than 20 lakh in surrounding three states and 20 districts but also provides excellent facilities for teaching and training of medical Under-Graduate, Post-Graduate and super-specialty students. The hospital has all broad and super-specialty departments and is known widely for its services in cardiology, neurology, urology, cardiac surgery, plastic surgery, etc. The hospital also provides services like endocrinology, gastroenterology, joint replacement, cancer surgery, child guidance centre, etc. The hospital has more than 260 intensive care beds for critically ill and sick patients. It also has modern facilities like CT and MRI scans, PET scan, etc. It is one of the first hospitals in the region to have a human milk bank.

## Faculty

The University boasts of qualified, experience and committed faculty members who are not only experts in their field but are also

trained in teaching technology. There are about 850 teachers in the University giving a very healthy student-teacher ratio of 1:7 overall and in medical college it is 1:2. The University offers all the courses in health science like modern medicine, dentistry, ayurveda, homoeopathy, physiotherapy, nursing science, pharmacy, etc. and also offers various need-based skill development courses and fellowship programs and certificate courses, etc. It also has a unique School of Music both in Vocal and Instrumental category.

## Teaching-Learning Practice

The University is known for its robust student centric teaching-learning strategy. Apart from conventional lectures and tutorials, there is emphasis on hands-on training, small group discussions, learning while doing, etc. ICT is extensively used in teaching-learning process, concepts like web-based learning, blended learning, flipped class-room, etc. are practiced here. The focus of teaching and learning strategies is on higher level of learning, critically thinking, problem solving, clinical decision making, etc. Based on the excellence in teaching and learning, the NIRF has ranked our University as 13th best University on all India basis in their teaching-learning category.

## Research

The University right from its inception has been promoting research and faculty development which has resulted into a number of funded research projects/ publications and developing expertise of the faculty. The Maternal and New Born Research Unit of the University is known globally for its research in mother and new born health. Its transformative





research not only has resulted in high quality publications in journals like Lancet, New England Journal of Medicine, etc. but also helped save hundreds and thousands of mothers and their babies. Because of the good work of this research unit, it has been recognized as one of the premier research sites globally. It has been successfully able to get 4th cycle of NIH (USA) funding. This centre also generates funding from WHO, Bill and Melinda Gates Foundation, USAID, NIHCD and various other international foundations. The researchers from this unit are invited nationally and internationally for presentation of their work and / or as experts to deliver guest lectures and participate in symposia. The researchers of the University also generate grants and funding from Indian agencies like ICMR, DBT, Department of AYUSH, CCIM, AICTE, VGST, Department of Atomic Energy, etc. So far, in the last three years, grants of more than Rs.30.00 crores have been generated for various funded projects. Recently, this unit has received unique distinction as 'WHO Collaborating Centre' in Maternal and Perinatal Health for a period of four years, the first of its kind for a private University in South India. The research unit of the University has won the prestigious first ever Newton Babha Award in the year 2017.

### Collaborations

The University believes in collaborations and working together and benefiting from each other strengths. The University has 30 active national and international collaboration. The University has recently entered into a collaboration with the second oldest university in the USA viz. Thomas Jefferson University, USA. This collaboration will further enhance research output, faculty development and exchange of students. Apart from

this, the University has two Basic Health Science Research Centres, Central Research Facility in Ayurveda College and APJ Abdul KalamAyurtech Department in Ayurveda College, Drug Testing Laboratory, etc.

The Department of Medical Education of J.N. Medical College is recognized by Medical Council of India as Regional Centre and Nodal Centre where the faculty from more than 50 colleges are trained to impart quality medical education.

### Staff-Students Support, Co-Curriculum and Extra Curriculum Activities

The University provides generous support to its faculty / staff for undertaking research activities and a budget of Rs.10.00 crores is earmarked for research and development activities by the University. The University is also working with Industry and Government agencies to foster industry-academic interaction and Public-Private Partnership. The University has signed a Memorandum of Understanding with GE Healthcare for establishment of a 'Centre of Excellence in Digital Healthcare'. The University takes pride in its accomplishment in research publications, consultancy services and funded translational research.

The University believes in creation of knowledge by its various research projects and its dissemination by organizing various knowledge events like Conference, Workshops, CMEs, etc. This year, the University has hosted 4international, 10 national and 14 state / zonal and more than 100 CMEs and workshops. The total number of participants in these events is more than 12,000.

The University believes in holistic developments of the students and provides a very conducive environment for the same. It caters to the needs of curricular and extra-curricular activities and extends support for such activities. The students actively participate in various competitions and other events / activities. Each college organizes bi-annual supports meet, annual gathering and other co-curricular activities round the year. The University also invites eminent personalities from the society for enriching the lives of students by organizing various guest lectures. So far, more than 75 such guest lecturers have been organized under the University 'Guest Lecture Series'.

Various dignitaries and persons of repute are visiting the University from time to time, notable among them are Shri VenkaiahNaidu ji, Hon. Vice-President of India, Shri Narendra Modi, Hon. Prime Minister of India, Smt. Mridula Sinha, Hon. Governor of Goa, Shri B. S. Yediyurappa, Hon. Chief Minister of Karnataka, Dr. Kiran Kumar, Former Chairman, ISRO and many more.

The University is committed to academic and research excellence. The recognitions by various accreditations agencies assert our position as one of the top universities in the country. We however are aware of the futuristic needs of the students and marching ahead with our might.

### Constituent Units:

- Jawaharlal Nehru Medical College, Belagavi
- KLE Vishwanath Katti Institute of Dental Sciences, Belagavi
- KLE College of Pharmacy, Belagavi
- KLE Shri B M Kankanwadi Ayurveda Mahavidyalaya, Belagavi
- KLE Institute of Nursing Sciences, Belagavi
- KLE College of Pharmacy, Hubballi
- KLE College of Pharmacy, Bengaluru
- KLE Institute of Physiotherapy, Belagavi
- KLE Homoeopathic Medical College & Hospital, Belagavi

### Attached Hospitals:

- KLES Dr. Prabhakar Kore Hospital and Medical Research Centre
- KLES Dr. Prabhakar Kore Charitable Hospital

### Research Units:

- Women's and Children's Health Research Unit
- Dr. Prabhakar Kore Basic Science Research Centre
- Dept of Clinical Research
- Dept of Public Health

### Other Units:

- School of Music, Belagavi
- Community Radio Station, Belagavi
- School of Hotel Management, Belagavi

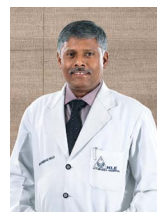
### Academic Excellence:

- Conducive academic environment
- International and National Collaborations
- Ph. D Programs
- University Dept. of Education for Health Professionals
- Academic Enrichment of Students and Faculty
- Academic Excellence reflected in Social Responsibility





# Structured to create the finest professionals



Knowledge is the base on which professionalism is built and The KLE Academy of Higher Education and Research (Deemed-to-be-University) spares no effort to ensure that its students get a world class education in their chosen stream. The focus is on creating an academic environment that gives them the knowledge and skills needed to keep pace with the advances in health sciences. It is a matter of pride that the KLE Academy of Higher Education

and Research (Deemed-to-be-University) has a faculty that students can look up to, for their vast knowledge and depth of experience. A number of faculty members have been recognized with prestigious awards such as the coveted 'Dr. B.C. Roy National Award for Eminent Medical Teacher' and the 'Hari-Om Ashram Alembic Award'.

## Medical Programs

### Programs

| Under-Graduate Program       |
|------------------------------|
| ■ M.B.B.S                    |
| Post-Graduate Programs       |
| PG Degree                    |
| ■ M.D. (General Medicine)    |
| ■ M.S. (General Surgery)     |
| ■ M.S. (Obst. & Gynaecology) |
| ■ M.D. (Paediatrics)         |
| ■ M.S. (Orthopedics)         |
| ■ M.S. (Ophthalmology)       |
| ■ M.S. (E.N.T.)              |
| ■ M.D. (Dermatology)         |
| ■ M.D.(Anaesthesiology)      |
| ■ M.D. (Radio-Diagnosis)     |
| ■ M.D. (Pulmonary Medicine)  |
| ■ M.D. (Psychiatry)          |
| ■ M.D. (Pathology)           |
| ■ M.D. (Microbiology)        |
| ■ M.D. (Pharmacology)        |
| ■ M.D.(Community Medicine)   |
| ■ M.D. (Forensic Medicine)   |
| ■ M.S. (Anatomy)             |
| ■ M.D. (Physiology)          |
| ■ M.D. (Biochemistry)        |

| Post- Doctoral<br>Super Speciality Programs (DM/M.Ch.) |
|--------------------------------------------------------|
| ■ D.M. (Neurology)                                     |
| ■ D.M. (Cardiology)                                    |
| ■ D.M. (Cardiac Anesthesia)                            |
| ■ M.Ch. (Urology)                                      |
| ■ M.Ch. (CTVS)                                         |
| ■ M.Ch. (Plastic Surgery)                              |
| ■ M.Ch. (Paediatric Surgery)                           |
| ■ M.Ch. (Neuro Surgery)                                |
| ■ M.Ch Surgical Oncology                               |
| ■ D.M. Nephrology                                      |
| ■ D.M. Gastroenterology                                |
| Fellowship Programs                                    |
| ■ Fellowship in Neonatology                            |
| ■ Fellowship in Cardiac Anaesthesiology                |
| ■ Fellowship in Paediatric Urology                     |
| ■ Fellowship in Maternal Fetal Medicine                |
| ■ Fellowship in Non invasive Cardiology                |
| ■ Fellowship in Cleft & Craniofacial Surgery           |
| ■ Fellowship in Micro Ear Surgery                      |
| ■ Fellowship inClinicalPaediatric Cardiology           |
| ■ Fellowship in Interventional Cardiology              |
| ■ Fellowship in Sports Medicine                        |
| ■ Fellowship in Joint Replacement                      |
| ■ Fellowship in Trauma and Emergency Medicine          |
| ■ Fellowship in Coronary Artery Bypass Surgery         |
| ■ Fellowship in Minimal Access Surgery                 |
| ■ Fellowship in Paediatric Neurology                   |
| ■ Fellowship in Vitreo-retinal Surgery                 |

## Medical Programs

| Allied Programs                                 |
|-------------------------------------------------|
| Under-Graduate Programs (B.Sc.)                 |
| ■ Medical Laboratory Technology                 |
| ■ Radiography                                   |
| ■ Anaesthesia Technology                        |
| ■ Cardiac Care Technology                       |
| ■ Perfusion Technology                          |
| ■ Neuro-Science Technology                      |
| ■ Renal Dialysis Technology                     |
| ■ Bachelor of Public Health                     |
| ■ Bachelor of Public Health (Hons.)             |
| ■ Hotel Management and Catering Technology      |
| ■ Bio Statistics & Population Science           |
| Post-Graduate Programs (M.Sc.)                  |
| ■ Anatomy                                       |
| ■ Physiology                                    |
| ■ Biochemistry                                  |
| ■ Microbiology                                  |
| ■ Echo Cardiography                             |
| ■ Perfusion Technology                          |
| ■ Biostatistics                                 |
| ■ Clinical Research                             |
| ■ Epidemiology                                  |
| ■ Immunology                                    |
| ■ Psychology                                    |
| ■ Population Studies                            |
| ■ Bio-technology                                |
| ■ Nutrition & Dietetics                         |
| Post-Graduate Programs (Master Programs)        |
| ■ Master of Public Health                       |
| ■ Master of Hospital Administration             |
| ■ Master of Public Health in Epidemiology       |
| ■ MPH in Health Economics and Outcomes Research |
| ■ MPH in Health care Quality and Safety         |

| Certificate Programs                                 |
|------------------------------------------------------|
| ■ Minimal Access Surgery                             |
| ■ Small Incision Cataract Surgery                    |
| ■ Biostatistics                                      |
| ■ Psychological Counseling                           |
| ■ Plaster Technique in Orthopaedics                  |
| ■ Paediatric Dermatology                             |
| ■ Bioethics                                          |
| ■ Public Health Informatics                          |
| ■ Paediatric Anaesthesia                             |
| ■ Intensive course in Epidemiology and Biostatistics |
| Post-Graduate Diploma Programs                       |
| ■ Diabetology                                        |
| ■ Nano-Medicine                                      |
| ■ Pulmonary Rehabilitation                           |
| ■ Geriatric Medicine                                 |
| ■ Medical Tourism                                    |
| ■ Public Relations (Hospital Care)                   |
| ■ Biostatistics                                      |
| ■ Library Science (Medical Literature)               |
| ■ Vascular Surgery                                   |
| ■ Transfusion Medicine                               |



# Programs



## Dental Programs

### Under-Graduate Program

- B.D.S

### Post-Graduate Programs

#### Degree M.D.S

- Conservative Dentistry & Endodontics
- Prosthodontics Crown and Bridge
- Oral and Maxillofacial Surgery
- Orthodontics & Dentofacial Orthopaedics
- Paediatrics and Preventive Dentistry
- Oral and Maxillofacial Pathology & Oral Microbiology
- Periodontology
- Public Health Dentistry
- Oral Medicine and Radiology

### Certificate Programs (No Enrollment for these courses)

- Perio-Esthetic & Periodontal Plastic Surgery
- Excellence in Esthetic
- Oral and Maxillofacial Implantology
- Fundamentals of Epidemiology and Biostatistics in Dental Research

## School of Music Programs

- Bachelor of Fine Arts  
(Hindustani Classical Music- Vocal)

### Certificate Programs

- Sugam Sangeet (Vocal)
- Percussion-Tabla
- Percussion - Harmonium

### Diploma Course - Music-Vocal (Hindustani)

- Basic Courses for Children

## Ayurveda Programs

### Under-Graduate Program

- B. A. M. S

### Post-Graduate Programs

#### M. D. Ayurveda

- Rasashastra & Bhaishajya Kalpana
- Dravyaguna
- Agadatantra AvumVidhiVaidyaka
- Shalyatantra - Samanya
- Kaumarabhritya - BalaRoga
- Panchakarma
- Kayachikitsa
- Swasthavrittrha & Yoga
- Rasayana & Vajeekarana
- Shalakya Tantra

### Post-Graduate Certificate Programs

- Ksharasutra
- Panchakarma
- Ayurgenomics
- Ayurtech
- Vajikarana
- Fellowship in Ayur- cardiology
- Fellowship in Ayur Oncology

## Homoeopathy Programs

### Under-Graduate Program

- Bachelor of Homoeopathic Medicine & Surgery (BHMS)

## Pharmacy Programs

### Under-Graduate Programs

- B. Pharm (Belagavi, Bengaluru & Hubballi)
- Diploma in Pharmacy (Belagavi & Hubballi)

### Post-Graduate Programs - M. Pharm

- Pharm D BP (Belagavi & Hubballi)
- Pharmaceutics (Belagavi, Bengaluru & Hubballi)
- Pharmacology (Belagavi, Bengaluru & Hubballi)
- Pharmaceutical Chemistry (Belagavi, Bengaluru & Hubballi)
- Pharmacognosy (Belagavi)
- Pharmacy Practice (Belagavi)
- Quality Assurance (Belagavi)
- Pharm D (Belagavi, Bengaluru & Hubballi)
- Fellowship in Clinical Research (Belagavi)
- Ph.D (Belagavi, Bangalore & Hubballi)

## Nursing Programs

### Under-Graduate Programs

- B.Sc. Nursing
- Post Basic B.Sc. Nursing

### Post-Graduate Programs

#### M. Sc. Nursing

- Medical Surgical Nursing
- Obstetrics & Gynecology Nursing
- Paediatrics Nursing
- Community Health Nursing
- Psychiatry /MentalNursing
- Nurse Practitioner in Critical Care

### Diploma Programs in Renal Nursing

## Physiotherapy Programs

### Under-Graduate Program

- B. P. T

### Post-Graduate Programs M P T

- Orthopaedic Manual Therapy
- Paediatrics
- Orthopaedics
- Neurology
- Community and Rehabilitation
- Cardio Vascular & Pulmonary (CVTS)
- Sports
- Obstetrics and Gynecology (OBG)
- Oncology
- Geriatrics

### Certificate Course

- Sport Conditioning

### PG Diploma Course in Cardiac Rehabilitation

For those with a true thirst for knowledge, the KAHER offers a wide range of Ph.D. programmes covering every aspect of medical science. These programmes are conducted under the tutelage of the most accomplished of academicians with global exposure, a deep sense of commitment to students and the discipline of their choice.

The comprehensive list of doctoral programmes offered is given below:

### DOCTOR OF PHILOSOPY (Ph.D. Programs)

#### MEDICAL AND DENTAL FACULTY

All Subjects of Pre-Clinical, Para-Clinical & Clinical Disciplines.

#### OTHER DISCIPLINES OF HEALTH SCIENCES viz

Pharmaceutical Science, Nursing, Ayurveda, Physiotherapy, Hospital Administration, Public Health, Medical Education.

#### INTER DISCIPLINARY Ph.D. Programs

In the areas of Bio-Medical Engineering, Management, Tourism, Economics, Arts and Social Sciences, Law, Commerce etc. having a potential of application in Medical field.



# Clear focus that enables healthy and positive outcomes



## Women's and Children's Health Research Unit



Jawaharlal Nehru Medical College Women's and Children's Health Research Unit (JNMC-WCHRU) established in 2001 is a member of the NICHD Global Network for Women's and Children's Health Research, USA. The unit has gained the international acclaim in conducting trials to improve the health outcomes of women and children at the community level and translating the research evidence to practice with national and global impact. The JNMC-WCHRU has been designated as 'World Health Organization Collaborating Centre for Research in Maternal and Perinatal Health'. The Secretary of Health, heading the department of Health and Human Services along with the delegation from USA visited JNMC-WCHRU, Belagavi to directly observe the research activities conducted in the rural areas level. The JNMC research team received appreciation for the outcomes in the community based studies focused on women's and children's health and its commitment to improve the health status of rural India.

In order to promote a strong research environment, provide oversight and translate research into better health standards, the KAHER's Research Foundation was set up in 2006. The Foundation provides the necessary physical and administrative facilities to enhance the quality and quantity of research conducted in the constituents of the University. The Site Management Office has been set up at KLES Dr Prabhakar Kore Hospital & Medical Research Centre for the systematic conduct of clinical drug trials. The adoption of 2 Primary Health Centres and 2 Urban Health Centres is a role model for rural community training. A strong private-public model between KLE and the public health systems in three districts of Karnataka, has been established. The Ministry of Health, Karnataka, has also chosen to adopt the KLE model to improve health services across the State. The University's commitment has resulted in rapidly ramping up global collaboration and receiving funding for research projects from many national and international agencies.





# Working towards a healthier society

## Research

### Clinical Research

The Site Management Office (SMO) of the KLE Academy of Higher Education and Research (KAHER) has been established with state-of-art facility for executing the Regulated Clinical Trials of Phase II, Phase III and Phase-IV including Pharmacokinetic and Pharmacodynamic Studies. The SMO has all the facilities / infrastructure on par with international standards and meet the guidelines issued by DCGI and ICH-GCP. In order to implement a protocol professionally, SMO has dedicated and licensed drug storage area separately for ambient with Refrigerators of 2oC to 8oC, -20o and -70o facilities, data entry area with a secured storage cupboards, high speed secured internet, etc.

The KLES Dr. Prabhakar Kore Hospital and Medical Research Centre has a rich experience in conducting the trials with a high data integrity in compliance with Regulators, sponsors, auditors, etc. The site has an expertise in all therapeutic areas viz, Cardiology, Paediatrics, Ophthalmology, Oncology, Gynaecology, Vaccines, etc. The site is one of its kind dedicated Archival facilities with all security features viz. Smoke detectors, Access control entry, Fire resistance cupboards well developed sop etc. .

The Ethics Committee of KAHER is registered with DCGI and has a unique distinction of having accredited by NABH and FERCAP in compliance with the Declaration of Helsinki, International Conference on Harmonization [ICH] guidelines, Good Clinical Practice [GCP] standards, Council for International Organizations of Medical Sciences [CIOMS] guidelines, World Health Organization [WHO] standards and operational guidance for ethics review of health related research and surveying and evaluating ethical review practices, EC/IRB standard operating procedures [SOPs] and local regulations and standards in ethical review.

### Public Health

In 2008, The KLE Academy of Higher Education and Research (Deemed-to-be-University) established a Department of Public Health to create a cadre of professionals equipped to deal with community health issues. The two-year post-graduate degree is open to graduates from different disciplines.

The Masters in Public Health program provides students with a strong foundation in health planning, policy making and research. Rigorous training in the 2 Primary Health Centres and 2 Urban Health Centres attached to the University gives students exposure to real-life situations as they engage in community based research, participate in national health programs and investigate epidemic outbursts. The program has been developed in collaboration with the School of Public Health, University of Michigan and faculty members of this University participate in training the students.

### Basic Research

The Dr. Prabhakar Kore Basic Science Research Centre, Belagavi, is a state-of-the-art facility dedicated to enhance the quality of medical treatment. A multi-disciplinary team of faculty members and students carry out research in the spheres of Bio-pharmaceuticals, Pharmaceutical Analysis, Medical Microbiology and Natural Products. The 10,000 sq. ft. centre houses advanced equipment ranging from inverted microscopes and bio-photometers to HPCL with fraction collector and UPCL with Fluorescence detector.

The centre regularly hosts workshops, seminars and training programs for the benefit of participants from KLE University as well as others. Besides two major research projects funded by VGST and KLE Academy of Higher Education and Research (Deemed-to-be-University), the centre has a host of other research programs, spanning Medicine, Dentistry, Pharmacy and Ayurveda. The work done at the centre has resulted in the publication of several high quality research papers. In a short period of time, the centre has carved a niche for itself through the quality of its research.





# Structured to create the finest professionals



## KLE Jawaharlal Nehru Medical College, Belagavi



In order to bring about a much-needed change in the domain of medical education and healthcare in North Karnataka compelled KLE Society to establish Jawaharlal Nehru Medical College (JNMC) at Belagavi in 1963 which is today, recognized as a flagship institute of KAHER. Set in green, eco-friendly campus, the college has gained a reputation as one of the finest medical training institutes in the country. The college is recognized by the Medical Council of India besides being listed in the WHO directory of World Medical Schools.

World-class infrastructure, excellent academic programs and distinguished faculty have been the key to the college's well founded reputation for producing doctors of high caliber. The college has the distinction of having several coveted award winning faculty members who have won prestigious awards such as 'Dr. B. C. Roy National Award and 'Hari-Om Ashram Alembic Award'. The college boasts of a faculty student ratio which is 30 - 40% higher than required by regulatory bodies.

J N Medical College, recently celebrated its golden jubilee on completion of 50 years of dedicated service which included several academic, social and cultural activities. The year-long celebration culminated with pomp & grandeur. On 19th December 2019, Hon'ble Prime Minister of India Shri. Narendra Modi (the then Chief Minister of Gujarat) was the Chief Guest for the function.

The college has a 2400 bed Dr. Prabhakar Kore Charitable Hospital attached to it which serves as a teaching hospital. The students are also trained at the Super-Specialty Dr. Prabhakar Kore Hospital and Medical Research Centre. The hospital conducts several health check-up camps every year, almost covering a population of 50,000 to 100,000 poor and deprived individuals in this region. The social commitments by our constituent units have been well - appreciated by all sections of the society. The college has

collaborative agreements with universities and health bodies, both International and National. The quality of medical education imparted, regularly attracts students from across the world.

### College Strength

- Women's and Children's Health Research Unit, Jawaharlal Nehru Medical College, KLE Academy of Higher Education & Research, Belagavi has been designated as a "WHO Collaborating Center for Research in Maternal and Perinatal Health".
- Recognition of DOME as MCI Regional training Centre & Nodal Centre
- Collaboration with Thomas Jefferson's University for Research and Students Exchange
- Translating Research Evidences into National Policies for Research Publications
- All Basic & Super-specialty services & hi-tech facilities under one roof.
- Eco-friendly Hospital Initiatives
- Integrated Support Services in the Hospital
- Offering of diverse Allied Health Courses
- Govt. Health Schemes & PPP Projects for poor patients
- Cost-effective Comprehensive Pediatric Care for "Children with Special Needs"
- Poison Detection Centre which is the only center in North Karnataka
- Cadaveric Skill Laboratory (NABL Accredited Lab & NABH Accredited Hospital)
- Amruta - Human Milk Bank (first of its kind in North Karnataka)
- Organ Transplant Unit for Heart, Kidney, Skin, Cornea, etc (first of its kind in North Karnataka)





# Lending a helping hand and providing the healing touch



## KLES Dr. Prabhakar Kore Charitable Hospital, Belagavi



The Dr. Prabhakar Kore Charitable Hospital was set up with the specific objective of providing relief to patients belonging to economically weaker sections. The 1240 bed hospital provides free treatment, medicines and food to patients. During the golden jubilee celebration of J. N. Medical College, the 240 bedded "Suvarna JNMC ward" was added. The hospital, on average, caters to over 7 lakh out-patients and conducts 15000 surgeries in its fifteen operation theatres, annually. Above 57000 in-patients are provided treatment. The 12 departments of the hospital provide much-needed practical experience to the students of the J.N. Medical College, Nursing and Physiotherapy and Certificate Courses. The hospital demonstrates, on a daily basis, that social responsibility and excellent medical care can be practised in its finest form.

The departments at the hospital offer diverse medical care and excellent learning opportunities for the students. These are:

- General Medicine
- General Surgery
- Obstetrics & Gynaecology
- Orthopaedics
- Anaesthesiology
- Ophthalmology
- ENT
- Paediatrics
- Dermatology, Venere and Leprosy
- Pulmonary Medicine
- Psychiatry
- Radiology



This demonstrates how a "Charitable hospital can still retain its corporate culture."





# Taking advantage of medical advances to provide new hope



## KLES Dr. Prabhakar Kore Hospital & Medical Research Centre, Belagavi



An integral part of the KLE Academy of Higher Education and Research (Deemed-to-be-University), the Dr Prabhakar Kore Hospital and Medical Centre recognised as one of the most exceptional tertiary care medical facilities in the country. A 2400 bed modern hospital envisioned by Dr Prabhakar B. Kore, set on an 18-acre plot also offers an additional 1240 beds free of cost to the needy. The hospital provides the services of more than 300 consultant doctors, skilled nurses, technical and paramedical staff. The state-of-the-art infrastructure includes 30 operation theatres and a wide range of speciality and super-speciality features. To provide comprehensive healthcare in a single location, the hospital offers a host of state-of-the-art facilities which include PET Scan, Oncology, Joint Replacement surgeries, Human Milk Banking system, Skin Bank, Organ Transplants, Trauma and Emergency Care. The unique aspect of this establishment is that all these facilities are also offered free of charge to the weaker sections of society, thereby dispelling the common belief that large, modern hospitals are only for the affluent.

The Hospital has achieved many distinctions in cardiac transplants and organ transplants. The U.S. based 'Smile Train Project' enables children with cleft lip and palate, and other dental deformities to benefit from surgery.

Another the department known for its path-breaking work is the Department of Clinical Immunology and Rheumatology that provides services to patients who have AIDS, Auto-Immune disorders of joints and many other specialities. Recognising research as a critical element of healthcare studies, the hospital provides clinical facilities to the students of the attached medical college situated in the campus, which offers under-graduation, post-graduation and post-doctoral super-speciality courses.

The "Advanced Medical Sciences and Research & Development

cell" regulates research facilitates for functional studies. The Research-cell also supports facilities that include a digital library with on-line access to journals, e-environment lecture theatres and telemedicine health projects.

The hospital also has satellite health care centres at Ankola, Goa, Gokak, Chikkodi, Gadinglaj and Jamkhandi in its endeavour to provide quality healthcare to all sections of society. The hospital continues to set excellent standards. It ensures that the KLES Dr Prabhakar Kore Hospital and Medical Research Centre remains a role model that symbolises the highest levels of healthcare on par with the best in the country.

### An enviable track record

- First Heart Transplant in North Karnataka state outside of Bangalore district
- Over 23,000 open & closed heart surgeries
- More than 6,500 interventional/ therapeutic cardiological procedures
- Over 24,000 coronary angiographies, angioplasty, valvotomy, pacemaker implants
- Over 15000 newborn babies treated at neonatal children registered at the child development clinic
- Over 17,000 patients registered at the Diabetes Centre for speciality care, & over 470 Children with Type 1 Diabetes
- Over 74,500 haemodialysis done
- Over 5,500 mentally / physically challenged patients treated
- Over 7,200 cosmetic surgeries done
- Over 4,300 E S W L s and 1200 laparoscopic surgeries performed
- NABL Accredited Lab & NABH Accredited Hospital Exceptional
- Liver, Bone-Marrow, Kidney Transplant, Skin-Transplant, Cornea under multi-organ transplant programme initiated.





# Smiles that reflect professional achievement



## KLE Vishwanath Katti Institute of Dental Sciences, Belagavi



The KLE VK Institute of Dental Sciences was established in 1985 imparting Bachelor and Masters Degree in Dentistry along with Diploma courses on Dental Mechanics and Dental Hygiene. Knowledge and skills effectively instilled through creativity and innovation in teaching, learning and evaluation and builds scientific temperament among dental students through research oriented activities. This is to build values, ethics and civic responsibilities in students which can help them to acquire professional abilities and personality development to ensure that students graduating from this institution are not only well trained professionals but also individuals having sound moral character.

Restoring smiles back on peoples' faces is what drives the Doctors and the Dental staff at KLE V K Institute of Dental Sciences. Located in North Karnataka, the institute with a history of 34 years of dedicated service, specializes in imparting world class dental treatment to patients from both India and abroad. Equipped with the most advanced medical equipments to handle and manage all types of clinical conditions, the Institute of Dental Sciences offers the most comprehensive treatment and diagnostic facilities related to dental and oral conditions.

Highly qualified and well trained team of dedicated Dental Surgeons and Dental Technologists ensures that the patient's treatment and care are of best standards, living up to the patient's aesthetic and functional expectations. Treatments like replacement of missing tooth / teeth either by implant dentistry

or fixed prosthetic replacement, cleft lip and palate correction, orthognathic surgery, correction of gingival and periodontal problems, maxillo-facial prosthesis and correction of tooth discoloration are rendered at the institution. Moreover, a holistic approach is undertaken at the institute to counsel the patients for de-addiction in habits like smoking & tobacco abuse. Counselling is also offered for patients with psychosomatic disorders and HIV infection. The KLE V K Institute is well equipped with state of the art technology, two mobile dental clinics to render treatment at PHC's and rural areas to cater to the dental needs of patients at their door step. To further commit to our social obligations, the institute has successfully developed and implimented MoUs with Government agencies and NGOs.

Apart from rendering education in field of Dentistry and patient care, research has been the backbone for developing evidence based standard operative procedures. The students and faculty are motivated to conduct research on the identified thrust areas of research, ranging from easily accessible saliva to the complicated craniofacial corrections. Though modern science and technology has been the focus of research, the institute has done extensive interdisciplinary work and has obtained patents with traditional medicines.





# Learn the secrets of an ancient health-care system



## KLE Shri B.M. Kankanawadi Ayurved Mahavidyalaya, Belagavi



Ayurveda is a comprehensive, ancient Indian natural healing science, gaining regard and acceptance in globally. Ayurveda aims at preserving health of healthy and cure of diseased. Holistic approach is the uniqueness of Ayurveda with somatic, psychic and spiritual wellbeing. It emphasis on life style in terms of daily routine, seasonal routine and emphasized individualized (based on body constitution) approach.

The commitment of the Shri B. M. Kankanawadi to propagate this ancient Indian science lead to the genesis of Shri B. M Kankanwadi Ayurveda medical college in 1933, in Belagavi. The institute offers graduate course to post-doctoral education including super specialty fellowship programs in Ayurveda. All the courses are duly recognized by respective apex bodies.

The institute is India's first one to be accredited by NAAC and NABH in AYUSH sector. The institute is striding towards global excellence in Ayurveda by inculcating advanced technology and preserving the tradition. The attached KLE Ayurveda Hospital has a 300 bedded teaching hospital with every traditional and modern state-of-the-art facility and an array of sophisticated Panchakarma theaters which are considered the highlight of the establishment.

### Health Care Facilities Offered:

- Kaya Chikitsa : General Medicine
- Koumarabhritya : Pediatrics
- ShalakyaTantra : ENT and Ophthalmology
- ShalyaTantra : Surgery
- Panchakarma

- Prasuti and Streeroga
- Swastavritta
- Dental
- Physiotherapy

### KLE Initiatives

- Hridya- Ayur Cardiac Care
- Srishti- Fertility center
- Abhaya- Ayurveda cancer care
- Sumeda- Obesity clinic
- Pain management clinic
- Sports medicine clinic
- Garbasanskara- Ayurvedic approach for healthy progeny
- Samvardhana- A treatment and rehabilitation center for all

### special children

- Utsaaha- Ayurvedic lifestyle modification and rejuvenation center
- Priyangu- Skin and hair care clinic
- Nirvisha- Poison & Bite Management
- Manasollasa- Ayurvedic psychiatry and De-addiction center
- Thyroid clinic
- Pranada- Respiratory clinic
- Diabetic clinic
- Urology clinic

Svarnabindu being widely practiced throughout the country is contribution of KLE to Ayurveda





# A first mover in the region recognised across the country



## KLE College of Pharmacy Belagavi



KLE College of Pharmacy, a constituent unit of KLE Academy of Higher Education & Research (Deemed-to-be-University), Belagavi was commissioned in 1968, offering a Diploma program in Pharmacy. In the course of time, Degree program was started in 1975; the Master's program in 1988, the Doctoral program in 2000, and in 2014 Doctor of Pharmacy (Pharm. D) program was inducted. Over the past 50 years of its existence the college has transformed into a centre of academic excellence, which is evident by unique milestones such as NBA and NAAC accreditation; and 22nd Rank among Pharmacy colleges all over India by NIRF (MHRD), consecutively in 2018 & 2019. All courses at the institute are recognized by the Pharmacy Council of India (PCI) and AICTE. The institute has a strong Alumni Association with over 2000 active members, who are placed globally at various positions in academics, Clinical, Industrial, Regulatory and Entrepreneurial services. The institute is also recognized as a Quality Improvement Program nodal Centre and recognized as Continuing Education in Pharmacy (CEP) centre by Pharmacy Council of India. It is only one of the two colleges in Karnataka to get students under the QIP program. The college is known for the excellence of its academic programs and conducts quality improvement programs for the teachers from Karnataka, Maharashtra, Goa and other states. The MOU for faculty exchange programs have been signed with Thomas Jefferson University, Philadelphia, US. A prestigious research project to survey plants in the Western Ghats has been entrusted to the college by the ICMR, besides several other grants from different funding agencies like UGC, AICTE, ICMR, CSIR, DST, DBT and VGST. To further enhance the quality of programs and to cultivate research aptitude in the students, the college is setting up a state-of-the-art cell and molecular biology lab and bio-informatics division.



### Strength of the College

#### National and International Collaborations for research

- Thomas Jefferson University, Philadelphia, US
- National Institute for Traditional Medicine (ICMR), Belagavi for joint research Projects
- George Clinical, Bengaluru for Clinical Data Management Training
- Sanofi India Ltd., Goa

#### Top peer reviewed Indexed Journals where research papers have been published

- Talanta
- European Journal of Medicinal Chemistry
- European Journal of Pharmacology
- Journal of Molecular Structure

#### Important recognitions / Awards / Honours received by staff

- Lifetime Achievement Award by APTI
- Young Pharmacy Teacher Award by APTI
- IDMA Best Research Article award by IDMA, Mumbai
- Rajanibhai B. Patel Trust Best Thesis Award

#### Student Summer Fellowship through Indian National Science Academy (INSA) at

- Indian Institute of Technology (IIT), Mumbai
- National Institute of Immunology (NII), New Delhi
- National Institute for Research in Reproductive Health (NIRRH), Mumbai
- Indian Institute of Technology (IIT), Hyderabad



# A rich legacy that is progressing towards a brighter future



## KLE College of Pharmacy Bengaluru



The Sardar Veeranagowda V. Patil School of Pharmacy, Bengaluru was the first private institution in Bengaluru to offer a professional Diploma course in Pharmacy in 1976, the credit for this goes to the KLE Society which began the Pharmacy Degree course in the name of KLE College of Pharmacy in 1992. The College became a constituent unit of KLE Academy of Higher Education and Research (Deemed-to-be-University), Belagavi in 2009. The college has been accredited by NBA, AICTE, New Delhi and has a tremendously bright future with the Principal and Faculty possessing a rich legacy of experience. The track record of the college has been consistent and the alumni have found good opportunities in a variety of assignments both in India and abroad.

All the courses run by the institution are recognized by Pharmacy Council of India, New Delhi, All India Council for Technical Education (AICTE), New Delhi.

The campus offers a fine environment for the students and has facility including a well-stocked library, internet facilities and a number of well-equipped lab rooms. Separate hostels for boys and girls, conveyance and banking facilities make life easy on campus. Regular exchange programs with foreign universities keep the academic standards at par with those accepted internationally.

### College Strength

The college has established an unique identity for itself in Research, consultancy and extension activities. The college houses an off-campus Basic Science Research Centre, State-of-the-art pilot plant for solid dosage forms, Advanced Instrumentation and CPCSEA

approved Animal House facility with a qualified Veterinarian. The college has been identified to establish a Centre for Innovative Science Engineering and Education by Vision Group of Science and Technology, Govt. of Karnataka, for the years 2019-22, besides other grants from AICTE, ICMR, DST and BRNS (DAE). The College has successfully completed several consultancy projects with Industrial partners. The institute has a number of MoUs signed with Indian Institute of Science, Bengaluru, Rega Institute for Medical Research, Belgium, Institute for Tuberculosis Research, University of Illinois, Chicago and Dept. of Pharmaceutics and drug delivery, University of Mississippi MS, USA, for research collaboration leading to Joint publications. The College has received the Award for best NSS Unit for the state of Karnataka. The faculty members of the college are felicitated and bestowed with a number of awards and recognitions, a few among which are: The best NSS Programme Officer, State NSS contingent Leader for 70th Republic day parade, in addition to Best Scientist Award by the University, and STARS AWARDS FOR TEACHERS for excellence in academic research by American Association of Government College of Pharmacy, (Bengaluru) Alumni, New York, U.S.A.





# Preparing prescriptions for good health



## KLE College of Pharmacy Hubballi



An Institute distinctly being the first of its kind in the Hubballi-Dharwad region and formally commenced its courses in 1985 by offering a diploma program in pharmacy. In course of time, a Degree program (B. Pharm.) was started in 1991, a Masters program (M. Pharm.) in 1999, a Doctoral program (Ph.D.) in 2004 and Pharm. D. program in 2014. Located on scenic location on the old Pune- Bengaluru highway makes this college a delight for students. The Institution has every state-of-art infrastructure and every facility to offer the finest of education in Pharmacy. The college has also been accredited by NBA, AICTE, NewDelhi and recognized by Pharmacy Council of India, New Delhi, All India Council for Technical Education (AICTE), New Delhi and Government of Karnataka. In keeping with contemporary requirements, the college boasts of well-equipped laboratories, an extensively stocked library, spacious lecture halls etc.

A separate hostel facility for boys and girls, college bus facility, a bank, canteen, vast playgrounds, cyber cafes, bus services and other conveniences make life stress-free for students. An accomplished faculty that is regularly kept abreast with developments in the discipline ensures that students are prepared for challenging careers, anywhere in the world.

### College Strength

#### The Institution has:

- Qualified, competent and committed teaching faculty with integrity, sincerity & honesty.
- Good infrastructure for Research.

- Library with good volumes of Reference books and other study materials.

- Well-equipped laboratories.

The astute planning and foresight of the College has resulted in the identification of a set of objectives:

- To introduce M.Pharm. Course in emerging areas.
- To develop Industry - Institution interactions.
- To collaborate with various agencies of mutual interest in educational and career spheres.
- To set up a Drug Information Centre.
- To develop K.L.E. Society's Institute for Integrated Research in Traditional Medicine.
- To conduct Continuing Education Programmes.
- To arrange for campus interviews for placement opportunities.
- To facilitate the turnout of quality pharmacists.

Further, the College accentuate its emphasis on excellent education and plans to invest in equipment, technologies and other facilities in the near future.





# The noble art of caring'



## KLE Institute of Nursing Sciences, Belagavi

In the legendary story of Florence Nightingale, one of the noblest professions comes to light. In its tireless service to communities, the KLE Society has been credited with establishing an outstanding Institute of Nursing at Belgaum in 1987, at the KLE University campus. The institute is self-sufficient and has adequate modern equipment, functional laboratories, a well-stocked library and other facilities such as a clean spacious hostel, transport, banking and internet connectivity. All Courses are recognized by Karnataka State Nursing Council Bengaluru, Indian Nursing Council, New Delhi and Government of Karnataka (GOK). The institute is also re-accredited with 'A' grade by NAAC (2nd Cycle), MHRD and is recognized by UGC. The Students of this Institute gain tremendous insights and practical training at KLES Dr. Prabhakar Kore Charitable Hospital and KLES Dr. Prabhakar Kore Hospital & Medical Research Centre, Belagavi with 2400 bed.

The reputation of this college has been painstakingly built by a dedicated faculty, whose tireless efforts have made each student a thorough professional skilled in the theory and practice of a gentle science and the noble art of caring.

### College Strength

#### Name National and International Collaboration for Research

- International Collaborations with School of Health Sciences, University of East Anglia, Norwich, United Kingdom.
- Thomas Jefferson University College of Nursing, Philadelphia, USA.
- Southern Cross University, Queensland, Australia.
- Debre Behran University, Debre, Ethiopia.
- Chitawan Medical College, School of Nursing, Chitawan, Nepal.

#### Unique distinction at National and International levels

- The institute has been ranked as one of the top 10 promising nursing colleges in India for the year 2019 by the Knowledge review magazine.

#### Staff and Students exchange program under MoU:

- Faculty from School of Nursing Sciences, University of East Anglia,

Norwich, UK visiting annually to KAHER,INS on regular basis. Faculty from KAHER INS Belagavi visited to University of East Anglia, Norwich, UK.

- Faculty from Thomas Jefferson University, College of Nursing, Philadelphia USA to KAHER INS and faculty from KAHER INS visits to Thomas Jefferson University, College of Nursing, Philadelphia USA.
- Under student exchange program, UG students from University of East Anglia, Norwich, UK visits KAHER INS Belagavi and our UG students visit them regularly. PG students from Chitwan Medical College, Chitwan Nepal annually visits KAHER INS Belagavi and our PG students visit them regularly.
- Visit of nursing students from Southern Cross University, Queensland, Australia for a period of 3 weeks in June & Nov 2020.

#### Innovative programs:

##### Add-on courses department wise.

- Pediatric medication management
- Organ transplant Nursing
- Lactation counsellor Program
- Diabetic education

##### Value Added Courses

- National guidelines on infant & young child feeding(IYCF)
- Psycho-social rehabilitation
- Pain Management
- Respectful Maternity care
- Life skill

##### Interdisciplinary courses.

- Basic Procedures for patient care
- WHO multi professional patient safety measures
- Compassionate,Respectful and caring health workforce.

##### Career opportunities for nursing students:

- Huge opportunity in academic as well as health care organizations.
- Academic options such as teaching in Nursing Institutions.
- In hospital various opportunities are available like Nurse educator, Nurse researcher, Nurse administrator in India.
- Advanced Nurse practitioner, Nurse Specialist, Nurse anaesthetist in abroad.
- We maintain tie-ups with ace hospitals and healthcare organizations by conducting orientation programs.





# Relieving pain and gaining confidence



## KLE Institute of Physiotherapy, Belagavi

Physiotherapy is a new area of medical science that has become integral to modern day existence and rehabilitative care, across the world. This profession aims in helping to restore wellness to people following injury, pain or disability. A Physiotherapist assess, plan and implement rehabilitative programs that improves or restores human motor functions, maximize movement ability, relieve pain syndromes, and treat or prevent physical challenges associated with injuries, diseases and other impairments. The KLE Society started Bachelor of Physiotherapy program in 1994, at J.N. Medical College Belgaum under Karnataka University Dharwad. The BPT program subsequently was taken under the aegis of Rajiv Gandhi University of Health Sciences Bangalore in year 1997. The Department Started MPT program in Year 2000 and became a separate institute in the year 2004. The number of specialty branches in MPT has increased from 5 to 11 over the years. The courses are recognized by the Government of Karnataka and Indian Association of Physiotherapists. KLE Institute of Physiotherapy was taken under the ambit of KLE Academy of Higher Education and Research (Deemed-to-be-University) in year 2009. The 11 specialties in post-graduation are led by expert faculties dealing with academic, clinical & research training. All faculties are well qualified and among them 33% are PhD qualified with average experience of 10 years. The students are exposed to Clinical training in super-specialty setup at Dr. Prabhakar Kore Hospital & Medical Research Centre, Belagavi which is a 2460 bed establishment. Approximately 10,000 patients in the hospital and over 50,000 across the community are served by the department each year.

### College Strength

- The institute has one of the best infrastructures with a state-of-the-art advanced Physiotherapy Centre spread in 14,000 sq. ft.
- Community and extension services cater through 6 Peripheral Centers (Old age homes, special schools, PHC).



- The Institute received the best college award in India in 2016 from the Indian Association of Physiotherapy.
- The building and lighting arrangements support the green building concept. The institute building also imbibes 'Swachh Bharat' concepts in its true sense.
- The Library has more than 8222 books and 17 journals exclusively for Physiotherapy. Library digital section houses 30 computers with internet facility.
- Faculties of the institute have published 334 research articles so far. The faculties of institute have claimed 67 and students 57 prizes in scientific paper and poster presentation respectively. Students have also won 8 gold medals for excellence in scholastic performance at university level.
- To support the scientific publication, institute has started own Indian journal of Physical Therapy and Research (Web site [www.ijptr.orh](http://www.ijptr.orh) Published by Wolters Kluwer Medknow).
- Institute conducts professional development program on regular basis. So far Institute has conducted 3 Conferences, 52 workshops, and 64 guest lectures. The Sports physiotherapy department extended consultation services to 115 various sporting events of international, national & regional level events organized in Belgaum.
- The institute has MOUs with International (Thomas Jefferson University Philadelphia USA and Dr Randoll institute Germany) and National institutions/agencies (SPASTIN Chennai, CAPRI institute of manual therapy, New Delhi). The institute also encourages students exchange/clinical exposure to international and national reputed institutions.
- The Institute strives for holistic and global development of its student and to achieve it students are encouraged to take up Yoga classes, visit to orphanage homes, old age homes, and local industries, attend soft skill training programs etc.





# A globally accepted alternative that is safe and effective



## KLE Homoeopathic Medical College & Hospital, Belagavi



Homoeopathy is a most effective, harmless medical science founded by Dr. Samuel Hahnemann. It is based on fixed principles of single, similar and minimum. The basic principle is 'similia similibus curentur' meaning 'like cures like'. As the medicines have a proven effect on healthy human beings, Homoeopathy relies more on an individualistic approach and has absolutely no adverse effects whatsoever, as has been observed at any given time.

### Gentle and non-addictive

Unlike some conventional drugs, homoeopathic medicines are non-addictive and have no dangerous side-effects. Homoeopathy is safe to use for babies, children and pregnant or breastfeeding women, who are under the supervision of a homoeopathic doctor.

There are many myths and misconceptions about homoeopathy. Here are some common misconceptions: There is no belief in diagnosis, investigations of any kind and supplements. These are myths and not the realities, as these are only methods to understand underlying diseases and their state and not therapeutic measures. Homoeopathy has stood the test of time and has proven to be the most harmless and cost-effective therapeutic measure. Homoeopathy doesn't interfere with conventional medicine and should be seen as a complementary treatment, not as an alternative.

The focus of the KLE Academy of Higher Education and Research (Deemed-to-be-University) is to impart pure and conventional homoeopathic education and spare no efforts to educate and

train homoeopathic physicians to alleviate human suffering with greater compassion. We are committed to achieving this through many of our medical centres and cater to the medical needs of the population of this region.

The College has a distinguished and committed teaching faculty and The KLE Academy of Higher Education and Research (Deemed-to-be-University) has developed a "CLASS - APART" infrastructure with a focused vision of developing a "LEARNER CENTRED INSTITUTE" in the field of Homoeopathy.

A well established 500 bed hospital with state-of-the-art equipment, specialties, super specialties and an exclusive wing only for Homoeopathic patients. The hospital has all the facilities for training the students in Clinical skills essential to produce a well experienced, clinically competent and Genuine Homoeopathic Physician.





# Bringing music into life

## KLE School of Music & FM Radio Station



There is growing evidence that music is a source of well-being and the KLE University has taken the initiative of bringing music into lives. The North Karnataka region has a tradition of Hindustani Classical music that is unparalleled, maestros such as Bharat Ratna, Bhimsen Joshi and Padma Vibhushan, Mallikarjun Mansur hail from the region. Inspired by the renowned classical singer Padma Vibhushan, Gangubai Hangal, the School of Music was set up in 2008 and inaugurated by her with a memorable performance. The KLE Academy of Higher Education and Research (Deemed-to-be-University) sees the School as a way to pay tribute to the maestro and continue the tradition of Hindustani Classical Music.

The School of Music offers training in Vocal Music with courses such as Certificate and Diploma courses in Hindustani Classical Music and a Certificate courses in Sugama Sangeet. The courses are open to the staff and students of the University as well as people from all walks of life. The training is provided by a highly qualified and trained faculty. The school is fully equipped with sound-proof class-rooms, a music hall, music library and a recording studio. The school has a valuable collection of old recordings of performances by musical maestros as well as rare musical instruments.



### VENUDHWANI 90.4 FM (Community Radio Station)

Venudhwani is a community radio station set up by KLE Academy of Higher Education and Research (Deemed-to-be-University). The station is used as a medium to spread health awareness in Belagavi, and the surrounding regions and also gives opportunity to the budding artists to display their skills. The station also serves as a platform for schools, colleges and other public entities to air their views, while enabling Govt. bodies to reach out with public messages. A diverse range of programs spanning health, literature, personality development, public issues, etc, are aired. The station is a multi-lingual one with Kannada, Marathi, Urdu, Hindi, English and Konkani speakers forming its listener profile.



## Your place in the wide world of hospitality

Around the world, the tourism and hospitality industries are thriving. The need for thoroughly trained hospitality professionals is enormous. To meet the demand for trained hospitality professionals, the KLE Academy of Higher Education and Research (Deemed-to-be-University) has established BHM degree course at its campus in Belagavi. The degree programme is aimed at giving hospitality industry aspirants the knowledge, skills and attitude that will help them create successful careers. The Hotel Management (BHM 3 Years) programme at KLE Academy of Higher Education and Research is the first of its kind in the North Karnataka region and will be a premier facility for hospitality training.

The 3 year Bachelor of Hotel Management (BHM) degree course has been structured on the lines of global hospitality training programmes, combining theoretical learning with practical training. The course will provide a solid foundation in hospitality management. Besides gaining extensive knowledge of hospitality industry requirements, students will also develop a well-rounded persona through training in foreign languages, new technologies and etiquette. The training environment replicates global hospitality facilities and makes students ready to step confidently into real-world hospitality. The course will adopt a well-designed mix of theory and hands - on training, drawing on the experience of the Academy's highly reputed hospitality management institute at Bangalore.



PROGRAMME IS ASSOCIATED WITH  
HOTEL FAIRFIELD BY MARRIOTT, BELAGAVI  
SUBJECTS TO BE STUDIED UNDER THIS COURSE ARE

- Food and Beverage Service
- Food Production
- Bakery and Confectionery
- Front Office Management
- Hospitality Sales & Marketing
- Management Principles & Practices
- Hospitality financial aspects
- Accommodation Management

### CURRICULUM HIGHLIGHTS

- Participation in National Level Competitions
- Organizing of National Level Seminars & Tourism Fests
- Activity/Events based Learning
- Soft skills Training
- Guest Lectures
- Workshops/Seminars
- Food Fests
- Hotel Visits
- Vineyard Visits
- App Based Learning





# Going beyond the campus and rising above the ordinary



Shri M.V.Venkaiah Naidu, Hon'ble Vice-President of India



The day of Graduation is also a day of reckoning and with each passing year the graduates from KLE Academy of Higher Education and Research (Deemed-to-be-University) are making their mark in the [Medicine, Dentistry, Pharmacy, Homeopathy, Hotel Management and Nursing, to Ayurveda and Physiotherapy](#) profession. The 09 batch of students will be graduating on and

will participate in a grand convocation that heralds their transition from being a student to being a respected medical professional. With the backup of a strong alumni network and a dedicated faculty that assists them in their endeavours, the sky is indeed the limited for our graduates.



Prof. (Dr.) D.P. Agrawal  
Chairman, Union Public Service  
Commission



Prof. (Dr.) Ved Prakash,  
Chairman, University Grants  
Commission



Prof. H.A. Ranganath, Director  
National Assessment and  
Accreditation Council (NAAC)



Dr. Rajan Welukar  
Vice-Chancellor of University of  
Mumbai



Padma Shri Pratap Pawar  
Chairman, Sakal Media Group



Padma Shri Prof. Sanjay G. Dhande  
Member, UGC and Former Director,  
IIT, Kanpur



Prof. Dr. Venkata Rao  
Vice-Chancellor,  
National Law School University,  
Bengaluru



Smt. Mridula Sinha  
Her Excellency, State of Goa







## A stress-free zone that fosters academic excellence

To alleviate the rigours of academics, the campus encourages creativity and expression among its students. Whether it is dance, dramatics, quizzing or debate, the opportunity to experience, experiment and enjoy is the motto on campus.

The campus of the KLE Academy of Higher Education and Research (Deemed-to-be-University) has been designed to provide an environment that is conducive to learning. The serene, green campus spanning 12 acres hosts a range of sports activities such as Hockey, Cricket, Football etc. The campus houses comfortable hostels exclusively for boys and girls. Wholesome & tasty food catering to varied palates is provided by the canteen on campus.

A newly constructed Indoor Games Complex with a badminton court is another added attraction. A feather in the cap is the

presence of a lawn tennis court and swimming pool as per international standards. Transport facilities on campus and to other areas are well organized and regulated.

The campus also has access to the KLE Centenary Convention Centre, a large (Seating capacity of more than 2500) auditorium. This facility is used for mega events such as convocations, conferences as well as for cultural events.







# KLE Academy of Higher Education & Research

(Deemed-to-be-University)-Belagavi, Karnataka.

J N Medical College Campus, Nehru Nagar, Belagavi-590 010. Karnataka (INDIA) Phone: 0831-2444444, Fax: 0831-2493777.  
[www.kledeemeduniversity.edu.in](http://www.kledeemeduniversity.edu.in) Email: [info@kledeemeduniversity.edu.in](mailto:info@kledeemeduniversity.edu.in)